

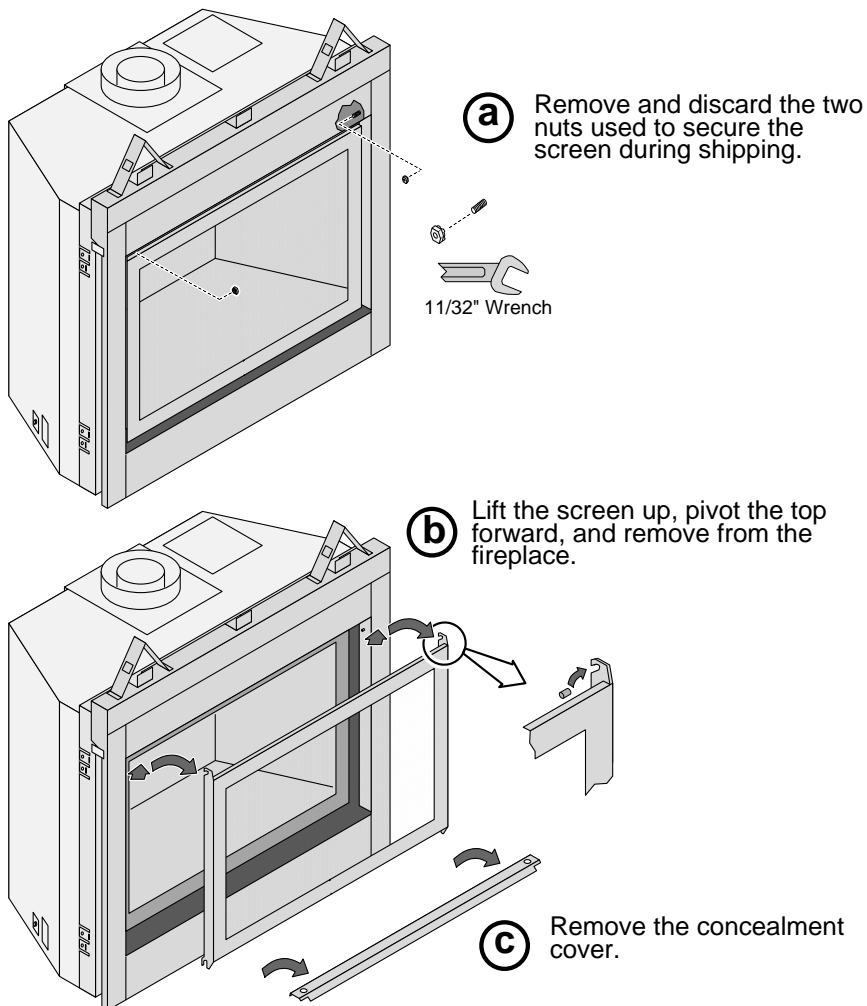


## 864 Cleanface GSR2 - Cheat Sheet

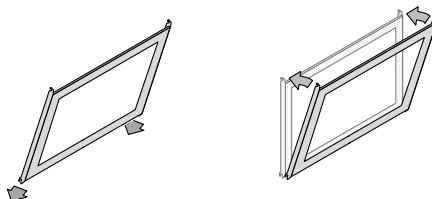
The 864 Cleanface GSR2 has several new features and characteristics that require special attention during installation and set-up. Refer to the owner's manual for full details.

### Accessing the Firebox

You will need to remove the screen on this fireplace to access the glass frame and firebox. Remove and discard the two nuts used to secure the screen during shipping. Next, remove the concealment cover and screen to access the glass frame.



**HINT FOR REPLACING THE SCREEN:** Hold the screen at an angle and insert the bottom slots first. Then pivot the screen forward to engage the top hooks.





TRAVIS INDUSTRIES  
HOUSE OF FIRE

## 864 Cleanface GSR2 - Cheat Sheet

### GreenSmart™ 2

This heater has GreenSmart™ 2 components from SIT. These components function in a near identical fashion to the previous GreenSmart™ 1 components. The primary differences are:

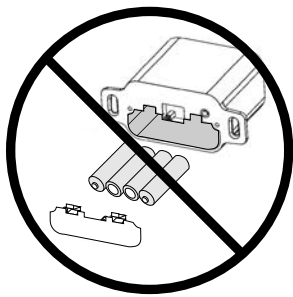
- The accent light now has dimming capability built into the remote.
- The pilot may be switched from intermittent (IPI) to standing pilot from the remote.

Refer to the owner's manual for full details.

### Remote Control / Pilot Warnings



Installing batteries in the battery holder or connecting the appliance to power may automatically initiate the CPI pilot mode, resulting in a lit pilot flame. Do not place combustibles in the firebox.



#### **KEEP BATTERIES AND COVER INSTALLED AT ALL TIMES**

The remote control system requires the batteries and battery cover to remain in place at all times. Once the batteries or cover are removed, the system may re-start in standing pilot mode. If this occurs when the heater is in Remote Mode, you will not be able to turn the heater off manually from the battery box.

If you need to replace dead batteries, make sure to **turn the appliance off** before removing the batteries.

**NOTE:** If the batteries go dead, the system will operate normally as long as household power is present.

### Installation Warnings

- **Remove Insulation when Converting to Top Vent Configuration** The insulation is only used for rear vent configurations. Failure to remove the insulation will impede air flow and may create a safety hazard.
- **3" (77mm) Clearance Above Vent when Rear Vented** See manual for details.
- **Top Vent vs. Rear Vent** Depending upon top or rear vent configuration, maximum vent configuration may change. See installation manual for details.
- **May Use 6-5/8" (169mm) Vent in Top Vent Configuration** See manual for details.